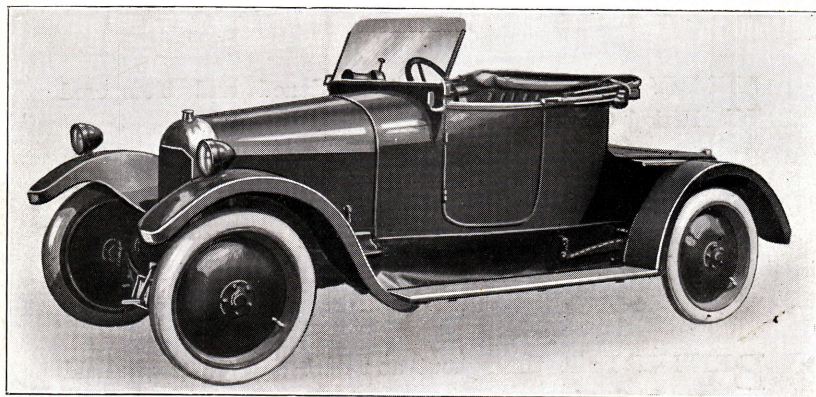


SPECIFICATION.

The
Stringer-Winco.

MEDIUM

LIGHT CAR.



**The Ideal Owner Driver Car
for a Lady or
Gentleman**

MADE IN SHEFFIELD.

POINTS.

ALL Parts made accessible, and where necessary adjustable, so as to take up the result of wear when required.

FLEXIBLE Cantilever Springing with arrangement to enable spring leaves to be lubricated.

ROBUST and Clean Design of all details.

HEAVY Construction of Oil Hardened and Tempered Nickel Chrome Gears and Axles.

CONTROL Levers and Pedals made to operate without effort.

BRITISH Built throughout and of best quality Sheffield made Steel.

LOW first cost.

LOW cost of maintenance.

LOW Running Cost.

SPECIFICATION OF

9 H.P. AND 11 H.P.

ENGINE.

:—4 Cylinders Vertical, Cast "En Bloc," with side by side valves, enclosed tappets, large water jacket with ample space to ensure satisfactory cooling by Thermo Syphon system, Lubrication by Pump oil Circulation to troughs, on side of Crank Case. Three Bearing Crankshaft, High Tension Magneto Ignition, Zenith Carburettor.

CLUTCH.

Ferodo lined cone, clutch shaft provided with two flexible universal joints making clutch very accessible. Clutch withdrawal by means of ball bearings mounted as rollers.

GEAR.

Three Speed Box, Lubricated by Oil Splash, Ball Bearings fitted with non-leak glands.

REAR AXLE.

Straight Bevel Type, Semi-floating, Gear ratio 4-1. All parts being of extra large dimensions for the work. Torque taken through tubular Steel Taper tube enclosing propeller Shaft. Differential Gear and Propeller Shaft mounted on Double Purpose Ball Bearings adjustable to allow of correct meshing of gears, and satisfactorily taking all end thrusts. Flexible Universal Joint from gear shaft fitted to splined propeller shaft. Road Wheels carried on large annular Ball Bearings, fitted to extensions on tubular Axle Housing.

FRONT AXLE.

H Section Beam. Stub Axles machined from Nickel Steel Forgings, Road Wheels carried on double annular Ball Bearings.

STEERING.

Irreversible worm and worm wheel type, worm wheel is complete, which allows it to be turned to 4 positions to remedy the inevitable wear which takes place on the teeth engaged when the car is running straight. Doverite Hand Wheel is fitted.

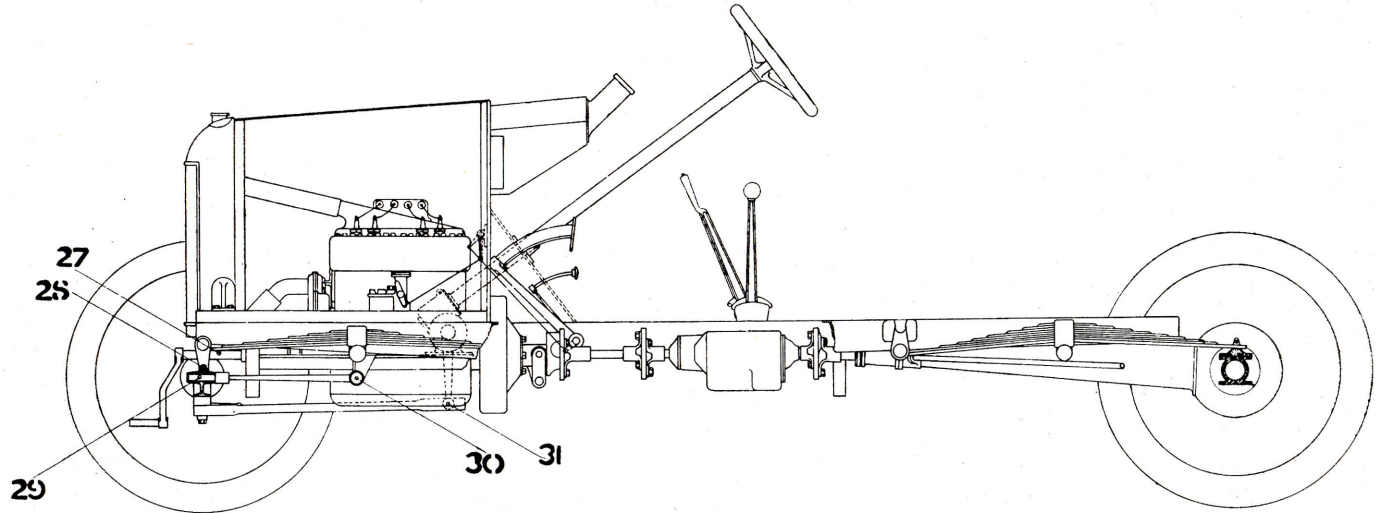
BRAKES.

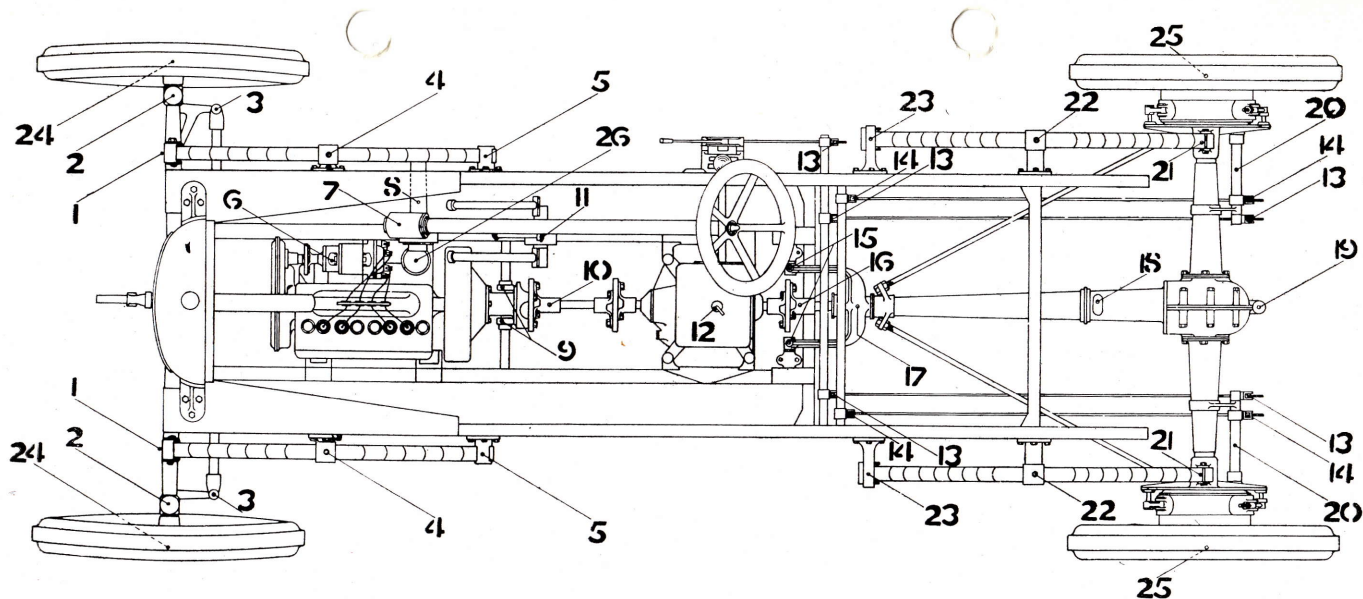
Foot-External contracting on large drums to which are fitted the rear wheels. These brakes are adjustable in every part and are capable of hard and continual wear. Hand-internal expanding of specially large dimensions. "Ferodo" Lining easily renewed.

ROAD WHEELS.

710×90 Sankey Double Disc Detachable. Spare Wheel and Carrying Hub supplied.

ARRANGEMENT OF CHASSIS AND DIAGRAM OF LUBRICATION





NAME OF PARTS REQUIRING OIL OR GREASE.

1 Front Spring Shackle. Oil	9 Clutch Withdrawal Races. Grease	17 Torque Tube "Y" Race Body. Oil	24 Ball Races on Front Hub. Grease
2 " Stud Axle. "	10 " Shaft Sliding Joint. Oil	18 Ball Races in Torque Tube. Gear Oil Every 1,000 Miles.	25 Ball Races in Rear Hub. Oil
3 " Coupling Rod Pin. "	11 Accelerator Pedal and Shaft. "	19 Back Axle Centre Casing. " Every 1,000 Miles. "	26 Engine. Every 300 Miles. Engine Oil.
4 " Spring Buckle. "	12 Gear Box. Every 1,000 Miles. Gear Oil	20 Brake Cam Shaft. Oil	27 Starting Handle Shaft Bracket. Oil
5 " " Rear Slide. "	13 Hand Brake Actuating Mechanism. Oil	21 Rear Spring Slide. "	28 Front Spring Shackle. "
6 Magneto. Special Oil	14 Foot " " " "	22 " " Buckle. "	29 Front Axle Bearing for Radius Rods "
7 Steering Box. Oil	15 Torque Tube "Y" Piece Ends. "	23 " " Shackle. "	30 Radius Rod Pin. "
8 " Worm Wheel Shaft "	16 Propeller Shaft Sliding Joint. "		31 Steering Pitman Arm Ball. "

Specification of 9 H.P. and 11 H.P.—Continued.

ROAD SPRINGS.	Cantilever Front and Rear, giving comfort such as is only usually obtainable on a large long wheel base car, one lubricator supplies lubricant to the centre rocking bracket and after percolates between the spring leaves.
PETROL SUPPLY.	From Tank in Dash, gravity fed through accessible filter to Carburettor. Tank capacity 4 gallons or sufficient for 130 to 150 miles.
CONTROL.	ENGINE—By sensitive foot accelerator between clutch and brake pedals. GEARS—By gate change lever on driver's right. BRAKES—Foot by pedal of extreme sensibility. Hand—by level at driver's right to pull to rear. CLUTCH—By very light pedal.
RADIATOR.	Gilled tube type amply large enough to keep engine cool in ordinary climates. Provision is made to enable fan to be fitted if required in Tropical Climates.
UNDERPAN.	A neat easily detachable underpan is fitted protecting parts from mud splashes and dust.
LIGHTING.	Lucas three lamp type with Dynamo driven from pulley on Crankshaft fitted as standard.
MATERIAL USED.	All materials are chosen with great care and represent in our opinion the most suitable for the particular purpose. Every care is exercised in ensuring that they are up to the standard required.
ACCESSIBILITY.	Is obtained by eliminating as far as possible any complication. The general design is as straightforward as possible to appeal to the owner driver who prefers to carry out his own repairs and adjustments. The result being a dependable and comfortable chassis in which a user may have every confidence.
SIZE OF ENGINE.	9 H.P. Engine $2\frac{3}{8}$ bore \times $3\frac{3}{4}$ in. stroke. Tax £10. 11 H.P. Engine, $2\frac{5}{8}$ in. bore \times $3\frac{3}{4}$ in. stroke. Tax £12.
PRICE.	9 H.P. Chassis, complete with engine bonnet, Platform Steps, 4 Tyres and 1 Spare detachable Wheel (without tyre). Lucas Lighting set three lamps, Horn, Jack, Pump and Tools. 11 H.P. Chassis, complete as above 9 H.P. chassis.

What you get.



Handsome Two Seater Motor Car, with Dickey Seat, upholstered in leather and finished in first class style.

Detachable Disc Wheels, with Spare Wheel. The Tyres being of much larger size than usually supplied with this price of vehicle.

Electric Light with properly installed Dynamo and Wiring.

A Dependable Motor Car, Easy to Control, and in which you can have every confidence.

Guarantee.



The "Stringer-Winco." Chassis is guaranteed to the original purchaser for 12 months from date of delivery against any breakage of parts due to faulty material or workmanship. This guarantee is limited to the supply of new parts or to the repair of broken parts sent to us for our inspection Carriage Paid. We undertake no responsibility for Tyres, Accessories and parts not manufactured by us and we accept no contingent liability whatever.

A Car to be proud of!



**STRINGER-WINCO.
MEDIUM LIGHT CAR**

**STRINGER & CO. (Sheffield) LTD.
Wincobank Steel Works,
SHEFFIELD.**